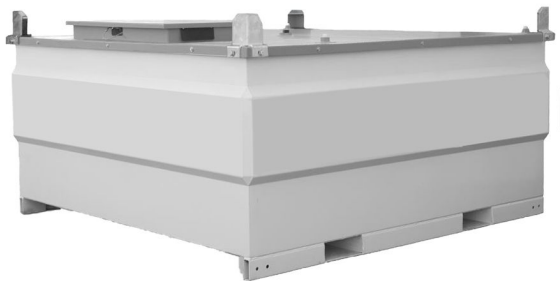


DOUBLE-WALLED FUEL TANK
SPECIFICATION DATA SHEET | MODEL: FCP1000



The FCP1000 is a compact, economic, double-walled fuel tank. Quickly and easily supply fuel where you need it, when you need it.

Transportable. Forklift pockets and internal baffles designed to allow handling of the tank full of fuel. (Not DOT listed, but can be moved with Diesel fuel)

Stackable. Easily stackable (2)-high empty to reduce storage space requirements.

Secure. Pumps, and Equipment enclosed in lockable area – not need for additional pump “Lock-Box”.

Environmentally Safe. Double-walled, 110% containment eliminates the need for additional spill pans, UL 142 approved.

SPECIFICATION

STANDARD FITTINGS:1” Pump Feed, Lockable Pump/Equipment Cabinet, Heavy Duty Skid Base with Forklift Pockets, Vent, Fill Cap, UL Plate, Durable Marine Grade Paint Specification, Stacking Brackets.

OPTIONAL EQUIPMENT:Direct Reading Float Gauge, 12v, 24v or 110 volt pump kits, Lifting slings, Hoses, Quick Couplers, Filters.

Capacity (brim full) Litres:	3945	Outer Tank Material Thickness:	1/8”
Capacity (brim full) Gallons (UK/US):	1042	Inner Tank Material (thickness):	1/8”
Dimension Length (in):	90.5”	Weight Empty Approx.	2388 lbs
Dimension Width (in):	86.5”	Weight Laden Approx.	9433 lbs
Dimension Height (in):	46.25”	Design Approvals:	UL 142,
Dimension Cabinet Opening:	34”wide X 21” deep		