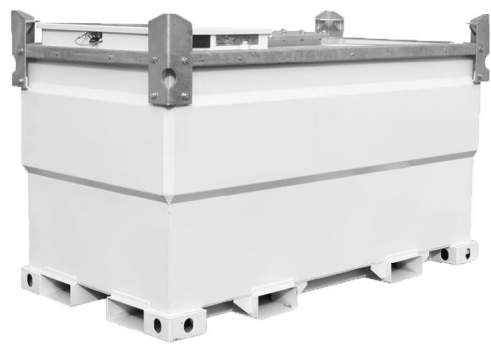


FUEL DEPLOYMENT SOLUTION
SPECIFICATION DATA SHEET | Model: 20TCG



This 20TCG is a multi-task on-site fuel deployment solution for the direct supply to stationary diesel engines or the refueling of equipment on demand.

Transportable. Full load lifting eyes, forklift pockets and internal baffles designed to allow handling of the tank full of fuel.

Stackable. Easily stackable (2)-high full of fuel and (3)-high empty to reduce storage space requirements.

Accessible. Access manway for maintenance and inspection of inner tank. Removable inner tank for servicing and cleaning.

Efficient. ENVIROconnect Equipment Cabinet locks and secures equipment and fuel ports to run up to 3 pieces of diesel-powered equipment.

Environmentally Safe. Double-walled, 110% containment eliminates the need for spill pans, UL 142 approved.

SPECIFICATION

STANDARD FITTINGS: High accuracy contents gauge; 3" Fill Point; 2" fusible link fill port; 1" pump feed with flexible dip pipe, strainer & non-return valve; (1) engine feed and return port set; pressure/vacuum vent; breather vent.

OPTIONAL EQUIPMENT: Complete transfer pump kits; water & particulate filter kits; fuel up to (2) feed & return blocks; fuel hose & quick couplers.

Capacity (brim full) Litres:	2000	Bund Material Thickness (in):	1/8"
Capacity (brim full) Gallons (UK/US):	528	Inner Tank Material (thickness):	1/8"
Dimension Length (in):	87"	Weight Empty (Lbs):	1,825 lbs
Dimension Width (in):	46"	Weight Laden (Lbs):	5,574 lbs
Dimension Height (in):	52"	Design Approvals:	UL 142, UN IBC Type 31A, US DOT
Dimension Cabinet Opening:	33½"W x 14" H		